

CM-2 License Plate Adapter Installation Instructions

OFF-ROAD USE ONLY

Tools required:

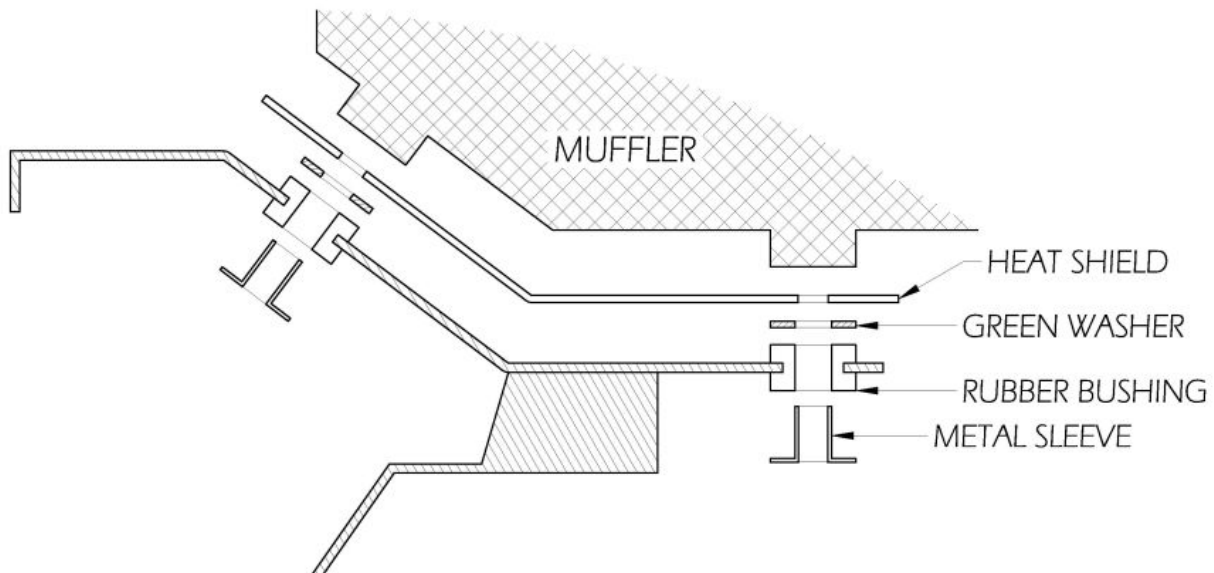
- 4mm & 5mm socket head (Allen) keys
- 8mm box end wrench

Included with your CM-2 will be a small package of hardware:

- (1) M8 lock nut
- (2) M5 washers

The CM-2 simply replaces the black plastic license plate mount that's sandwiched between the taillight and the muffler.

1. Remove the license plate.
2. Remove the (3) M5 socket head bolts that secure the taillight, then unplug the wiring from the back of the taillight.
3. Remove the (4) M6 bolts holding the black plastic mount to the muffler. Lots of pieces will fall off at this stage: (4) little green washers, (4) metal sleeves that go inside the rubber bushings, and a heat shield. Gather all the little bits up into a neat little pile.
4. Remove the (4) rubber bushings from the plastic mount, and install them into the CM-2. Put the (4) metal sleeves back into them, with the shoulder side DOWN, away from the muffler. Now here's the jiggy part: the (4) little green washers go between the rubber bushings and the heat shield:



It's a pain to get everything lined up, so be patient, and open a beer if need be. Once you get everything bolted together, torque the (4) M6 bolts to 10Nm (7 ft/lbs).

5. Plug in the taillight wiring, and find the (3) M5 bolts you removed from the taillight earlier. Round up the small hardware bag containing (1) M5 lock nut and (2) M5 washers. Secure the upper middle of the taillight to the mount using one of the M5 bolts and the provided M5 lock nut. Just SNUG it tight,

don't get happy with it, or you'll crack the plastic housing.

6. Secure the lower taillight to the mount using the (2) M5 bolts and the provided M5 washers. Tighten the bolts to 10Nm (7 ft/lbs). Here's the mount/taillight installed:



7. Turn the bike ignition on, and check the operation of the taillight, brake light, and both turn signals.

8. Mount the license plate.

9. *If you had a beer in Step 4, don't go for a ride for at least an hour per beer.*

I welcome feedback... if you have a problem or suggestion, please e-mail me at sailwa66@gmail.com

Thanks again, and enjoy the ride,
TD Graham